

CounterAttack Xenon

120V Undercabinet

QuickLink Capable or Hardwire

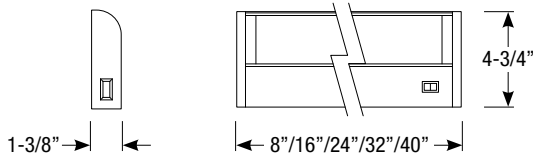
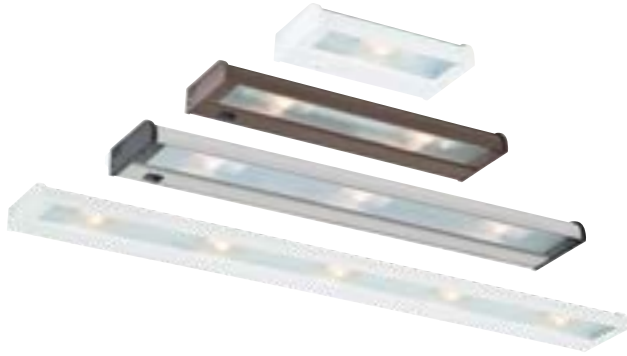
Catalog #:

Type:

Project:

Date:

Notes:



Electrical Data

Part Number	Total Wattage	Lamp(s)	Length
NCAX-120-8	35W	1 - Xenon 2900K	8" x 5"
NCAX-120-16	70W	2 - Xenon 2900K	16" x 5"
NCAX-120-24	105W	3 - Xenon 2900K	24" x 5"
NCAX-120-32	140W	4 - Xenon 2900K	32" x 5"
NCAX-120-40	175W	5 - Xenon 2900K	40" x 5"

Specifications

Description

Low profile CounterAttack series with included warm xenon lamps provide even illumination on all surfaces. Available in five lengths, three finishes and with QuickLink capabilities.

Lamp

- Socket: G8 base
- Wattage: 35W Xenon (each - included)
- Lumens: 270lm per lamp
- Color Temperature: 2900K
- Lamp Life: 9,000 hours

Electrical

- 120V input
- Dimmable with incandescent dimmer (must meet minimum load of dimmer)
- Linkable with QuickLink® or hardwiring

Mounting

Includes mounting hardware (captive screws). Can be hardwired at any point along the run or plugged into receptacle with a cord and plug (ordered separately).

Housing

- Slim 1-3/8" profile
- Extruded aluminum housing
- Hinged, removable, UV coated, prismatic glass diffuser for maximum light distribution

Finishes

Available in white, bronze or stainless steel

QuickLink® Linkable Cables and Connectors

CounterAttack is available in hardwire or QuickLink capable. QuickLink luminaires can be linked up to 600W with male and female connectors on the ends. Linkable with 10" or 18" QuickLink interlink cables or end-to-end with seamless connectors.

On/Off Switch

CounterAttack series can be controlled from individual on/off switches or from one master switch. Master switch can be directly connected to the end of a run or moved to a discrete area with QuickLink interlink cables. (ordered separately)

Listing

UL listed to US and Canadian standards for damp locations



Order Matrix

CounterAttack Xenon Order Matrix (Example: NCAX-120-32BZ)

Series	Connection Type	Length	Finish
NCAX	-120 (Hardwire) 120L (SpeedLink)	-8 (8")	WT (White)
		-16 (16")	BZ (Bronze)
		-24 (24")	SS (Stainless Steel)
		-32 (32")	
		-40 (40")	



QuickLink® Interlink Cables

Cable Length	Finish
QL-10 (10")	WT (White)
QL-18 (18")	BK (Black)



QuickLink® Cord and Plug

Cable Length	Finish
PL96 (96")	WT (White)
	BK (Black)



QuickLink® Master Switch (3" x 5" x 1")

Switch	Finish
CS-1	WT (White)
	BZ (Bronze)
	SS (Stainless Steel)

Revised 06/21/22